

**95 Daffodil Way, Chelmsford, Essex, CM1 6XE**

Available from: 17th January 2023  
Furnishing: Unfurnished

Rent: £1,400  
Deposit required: £1,400

THE  
**LETTING  
DEPARTMENT**







## A WELL PRESENTED 3 BEDROOM HOUSE IN A QUIET AND POPULAR PART OF CHELMSFORD

Daffodil Way is a well presented, 3 bedroom home. Approached by a garden path, running through the front garden, the property is accessed via an entrance porch with convenient in-set coat and shoe storage. The sitting/dining room is of generous proportion, featuring a large bay window affording plenty of natural light with a kitchen and large utility space to the rear offering further potential to be an office / play room.

Upstairs there are two double bedrooms and one single with a family bathroom and access to the loft.

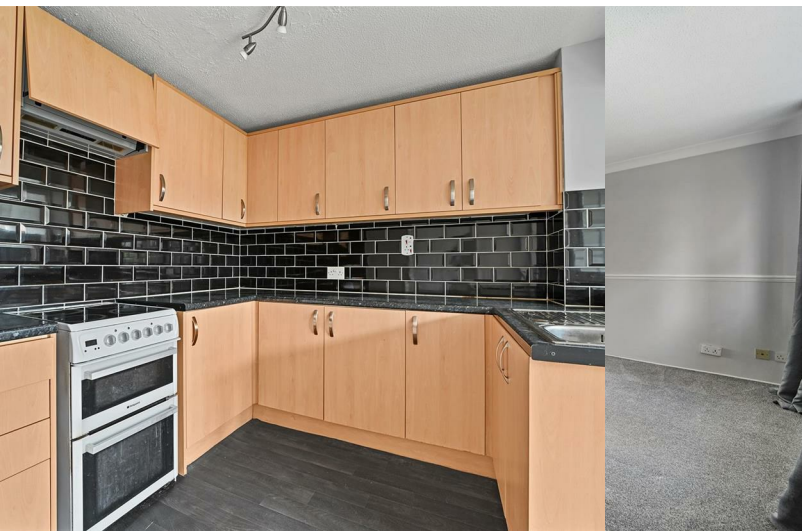
There is a small front garden with a path leading to the front door. To the rear, lies an enclosed garden with gated access to the single garage.

Situated at the end of a quiet 'no through road' over-looking a green in the popular area of Springfield, it offers easy access to Chelmsford Hospital and some excellent schools.



**Local Authority and Council Tax**  
Chelmsford City Council, Band C

**EPC Rating**  
Current D(65). Potential B(85).



**All enquiries:**

**Donna Spark**

[donna@thelettingdepartment.co.uk](mailto:donna@thelettingdepartment.co.uk)

**The Letting Department**

[info@thelettingdepartment.co.uk](mailto:info@thelettingdepartment.co.uk)

01473 372 222